

# Quick Technical Information

(LB 22) Connecting a Computer to Lower Control Box, Page 1

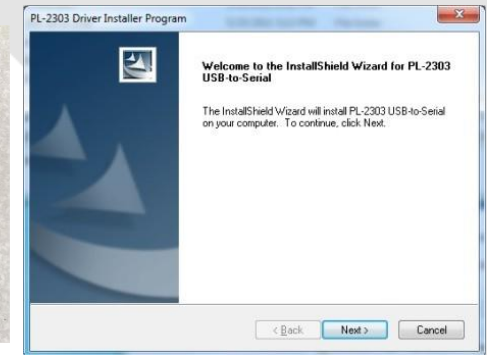
Before beginning, the USB to 9 Pin Serial port must be installed on a Windows based computer. **Apple computers will not work with our control boxes.**

You need a cable that looks like Pic 1. It is a 9 pin RS232 to a USB.  
(B22-00-0056 Kit-USB-Serial Port Adaptor)

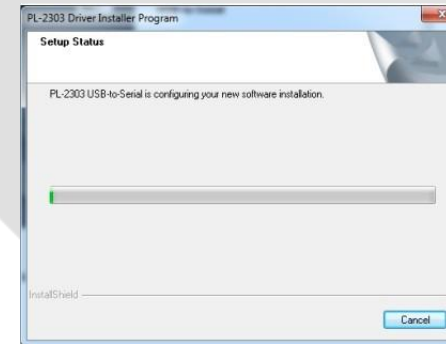
1. Drivers for this cable need to be installed and working. The drivers may come on a disk with the cable, or the packaging may give you a website to download the drivers. If you have a newer computer with internet access the cable may automatically install itself when plugged into your computer.
2. When installing the driver software you should get a window that looks similar to Pic 2 asking you if you want to install the driver. Click next to continue.
3. Next you should see a progress bar similar to Pic 3.
4. When the installation is complete you should see a window similar to Pic 4. Click Finish.
5. To find out what port the cable was installed on you can go to your Device Manager and find the cable in the PORTS list. Pic 5.
6. Look for the (COM#) next to the cable as shown in Pic 6. It helps to know what COM port the cable is installed on if you need to go to page 3.
7. Once the cable drivers are installed, continue to page 2 to connect to our control box.



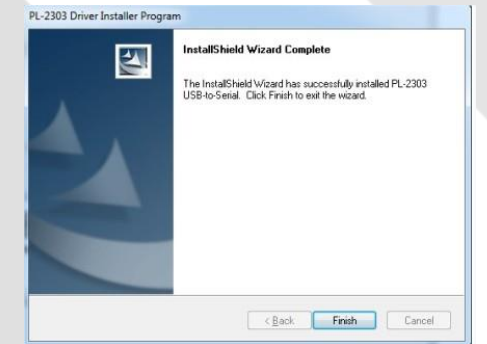
Pic 1



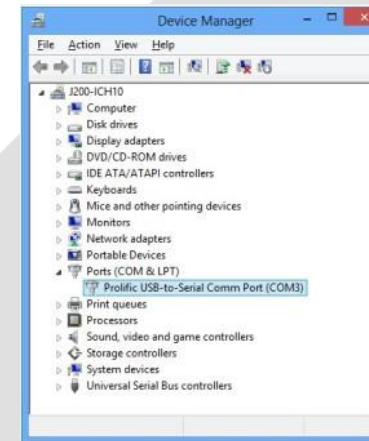
Pic 2



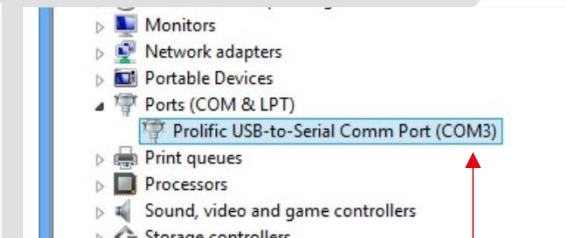
Pic 3



Pic 4



Pic 5



Pic 6

# Quick Technical Information

## (LB22) Connecting a Computer to Lower Control Box, Page 2

**Task:** Need to connect a computer to the lower control box to change settings.

**Tools:** Windows computer, 9 Pin to USB cable, Config program from Haulotte Tech Support.

**Note:** The drivers for the cable need to be installed before beginning. It may be necessary to try connecting multiple times before the connection is made.

1. Turn the machine on with the key to the ground control.
2. Open the Config program on your computer. Click the Enter button on the Warning screen. Pic 7. This screen may look slightly different depending on what machine model is selected when the program opens.
3. Connect the USB cable to your computer first, then the 9 pin connector to the machine control box. Pic 8.
4. At this point you want to see a window pop up that asks you if you want to “read the controller”. Click Yes. Pic 9. If this window does not pop up go to the next page.
5. It is important that you see a blue bar scroll across the bottom of the window. Pic 10. If you do not see this blue bar you are not connected and reading the settings from the control box. It may take several minutes to finish reading the settings. You may have to drag the window up to see the bottom of the window. The screen should update to the model of the machine when finished reading.
6. Now that you are connected you can change settings. Select a function button, make the setting adjustment, click accept. Pic 11. If a password is required click on the image of the key. In the window enter “Haulotemmdyy” for mmddy use the date of the day you are working on this machine. (USA date format) You only need to enter the password once while connected.
7. The next pop up will say “Before changes will take effect they must be written to the controller”. Click OK button. The changed settings will be written at this time. Pic12.
8. At this time test the machine to see if the changes have taken effect. If settings are not satisfactory, repeat steps 6 thru 8.
9. When finished making changes, disconnect cable from the control box. Pic 8. Power machine off, then back on, and test that the changed settings have taken effect.



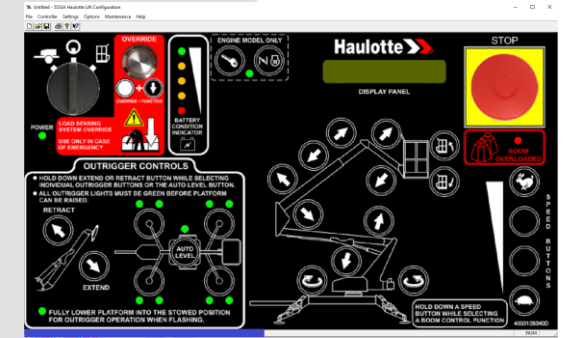
Pic 7



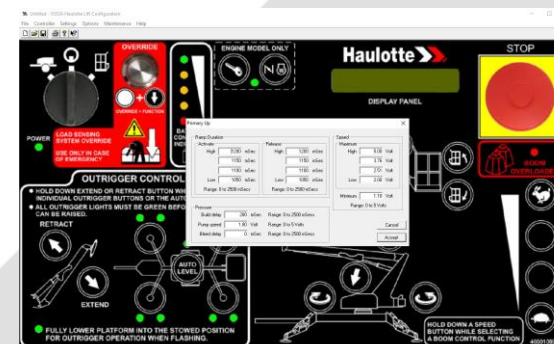
Pic 8



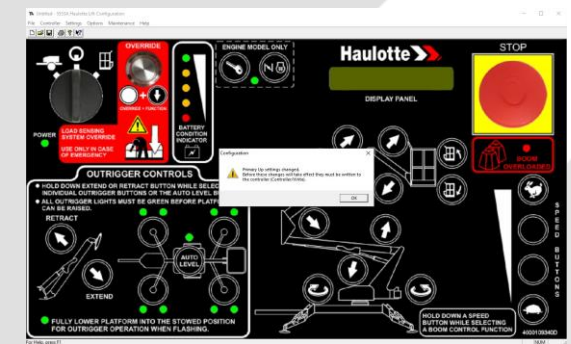
Pic 9



Pic 10



Pic 11



Pic 12

# Quick Technical Information

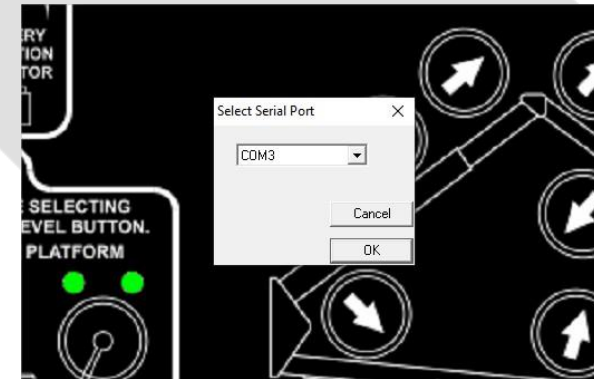
## (LB22) Connecting a Computer to Lower Control Box, Page 3

If the window in Pic 3 does not pop up follow these steps to get connected

1. In the upper left corner click on Settings. Then click Select Port. Pic 13.
2. A small window will pop up in the middle of the screen with options for Com Ports. Pic 14.
3. Use the down arrow in that window to display the number of Com ports that you have available. Each computer will have a different number of Com ports available.
4. Select a Com option in the list. If you know what COM port your cable was installed on select that Com port first. Page 1, Pic 5.
5. Then select Controller in the upper left corner. Pic 15. Then select Read.
6. You want to see the blue bar scroll across the bottom of the screen. Pic 10.
7. If you do not see the blue bar you are not connected. Repeat steps 1 thru 5 above selecting the next Com number in the list.
8. If no Com numbers will connect using Read, try using Write and go through the Com numbers again to get connected. Pic 15. Repeat steps 1 thru 5 above selecting the next Com number in the list.
9. Once you get connected return to step 6 on the previous page 2.



Pic 13



Pic 14



Pic 15